

BACK COVE 37

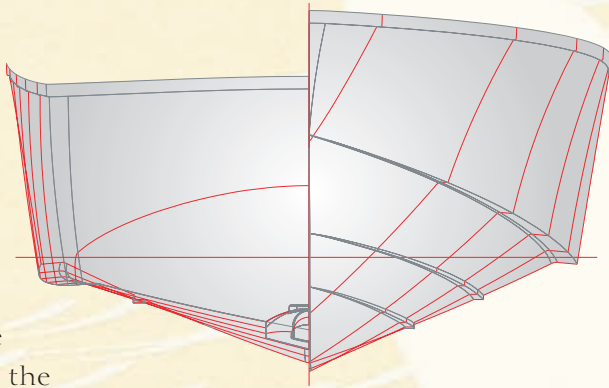
A Downeast Tradition



DESIGN

The Back Cove 37 is the largest Back Cove to date, following on the success of the 26, 29 and 33 footers. Our goal of designing simple, low maintenance boats that are easy on the eyes, easy on yard expenses and easy on the fuel bills, has been attained, with over 300 Back Coves in operation around the world today and the fleet growing rapidly.

Like other Back Cove models, the 37 has a single diesel engine, bow thruster combination that is more fuel efficient than many twin engine, gasoline powered, vessels of comparable size and displacement. New electronic diesels of the type installed in this and other Back Cove models are cleaner running and quieter thanks to common rail and other modern fuel injection technologies. Electronic engine and shifter controls are always smooth and predictable. Typical cruise speeds with standard engines are in the 20 knot range and optional engines are available that will raise cruise speed to the mid-twenties.



The Back Cove 37 hull is a vee-style with downward turning chines forward. This allows the boat to get on plane easily, with very little bow rise. Secondary spray rails throw water down and away from the hull at speed to ensure a dry deck and windshield. Aft, the hull turns to an 16 degree deadrise and her single propeller runs in a shallow propeller pocket to reduce draft and running angle.

A slight tumble home in her aft topside sections and signature spoon-shaped bow add an elegance to her profile. The reverse transom is handsome and practical as it adds to the amount of useable space on the swim platform. Her transom door is flush mounted and opens outwards to allow for the largest possible cockpit for fishing and for socializing with friends and family.

INTERIOR

The designer of the Back Cove 37 has drawn a "space within a space" layout that conveys an openness and bright feeling. Her main salon is surrounded by large windows, several opening wide to allow fresh air to flow through this luxurious space. This entire deck is raised to the height of the steering pedestal so as to provide the same views for helmsman, crew and guests: a proven design element of other Back Cove models which has become a big "why" factor that purchasers refer to over and over again as their favorite thing about their Back Cove.

Unlike so many contemporary yacht designs the Back Cove 37's side decks are a study in safety and ergonomics. Sturdy hand rails are always within reach, a slight rise in the deck bulwark to prevent a foot from slipping overboard, an aggressive diamond patterned anti-skid surface and extra high perimeter rails all add to the feeling of security on her deck. Forward a deep anchor locker offers plenty of volume for storage of lines and fenders as well as for ground tackle.

Enter the main salon from the sliding door and find a world of luxury, light and space. To port is a two person love seat and to starboard, a full L-settee that converts for

additional sleeping accommodations when needed. A high gloss inlaid table is the centerpiece of this welcoming space. At the helm two Stidd seats offer great sight lines of the waters ahead and equally great comfort for the long voyages you may already be planning. A large helm pod offers space enough for all of today's navigational electronics.

Looking forward, one sees the designer's "space within a space" concepts play out. With two steps down to the galley the crew is always a part of the scene in the salon and still retains good sight lines to the waters and the scenes passing by. This full galley with solid surface countertops and elegant cherry cabinets will provide the tools needed for great meals prepared on board. A drawer style refrigerator, microwave oven and ceramic cooktop are all provided and there is an abundance of storage space for provisions and cooking gear.

Step down again to the sleeping cabin area where a full head with shower stall services two cabins, each with a double berth. The guest cabin is a Pullman style and the owner's cabin is a full queen-sized island berth. Storage is plentiful and the flow from one space to another is unconfined.

BACK COVE STANDARD EQUIPMENT LIST

Preliminary July 2008

Mechanical Systems

- Cummins QSB 5.9 480 hp electronic engine and marine gear
- Electronic single lever engine control
- Digital engine control panel with alarms and hour meter
- Internal sea strainer
- Fuel Filter
- (3) Engine room lights
- 2" Aquamet shaft
- 4 Blade NiBrAl propeller
- Dripless shaft log
- Electric trim tabs with indicators
- 6" Exhaust with two stage horizontal muffler
- Teleflex hydraulic steering with tilt helm pump
- Stazo teak steering wheel
- Hot and Cold pressurized water (110V and engine heated)
- 11 gallon hot water heater with heat exchanger
- Bow thruster with joy stick control
- Marelon sea valves on underwater thru hulls
- Fireboy extinguisher system & carbon monoxide detector
- Macerator with overboard discharge

Hull

- Vacuum infused FRP construction
- Advanced prop pocket hull design
- Back Cove white iso-npg gelcoat
- Vinylester backup resin
- Cross-linked PVC foam core
- Multiaxial E glass reinforcement
- Awlgrip boot top
- Molded cove stripe depression with "gold leaf" style stripe

Deck

- Vacuum infused FRP construction
- Port & starboard molded steps leading to side & fore deck
- Teak accent stripe
- Back Cove white iso-npg gelcoat with graystone anti-skid on walking surfaces
- Multiaxial E glass reinforcement
- Lewmar hatch with screen in main cabin
- Lewmar hatch with screen over island berth
- Lewmar hatch with screen over head compartment
- Lewmar hatch with screen over guest stateroom
- Lewmar pilot hatches with screens/shades in hardtop
- (6) opening Port lights with screens
- Clear anodized aluminum windshield with center opening
- Trumpet horn on hardtop
- Anchor locker
- Molded Composite bow sprit w/ stainless steel anchor roller
- Mooring cleats w/ skene chocks forward, aft & spring line cleats
- Pop-up cleats at transom corners
- Custom 1 1/4" 316L stainless steel bow rail
- (2) Stidd 500N helm seats
- Swim platform and swim ladder
- Hot and cold cockpit shower
- Self bailing cockpit
- Transom Door
- Seat in cockpit with storage below

Electrical Systems

- AC and DC control panels with polarity indicator
- DC system battery management switching
- DC breakers for electronics

- (2) 110V AC 30 amp shorepower with 50 foot cord set
- Emergency parallel switch
- Galvanic isolator
- Battery Charger, 50 amp
- (2) 4D AGM house battery
- (3) Group 31 engine start battery
- (3) 12VDC automatic bilge pumps
- 12V outlet at helm
- Bonding system with zinc anode
- Cockpit courtesy lights
- GFI protected 110V circuits
- (3) windshield wipers with washer system
- Compass, illuminated
- Running lights

Half Down Galley

- Surface mount cook-top
- AC/DC drawer-type fridge/freezer compartment
- Galley sink with single lever faucet & drop in cover
- Solid surface countertop
- Under-counter convection microwave
- Drawer and doors below counter
- Molded lighting soffit over countertop
- Premium flooring material

Salon Seating Area

- L-Settee with Hi/Low table – converts to double berth
- Double settee opposite with molded end table
- Flip-down LCD TV w/ DVD
- Large engine room hatch opens by electro-hydraulic actuator
- Premium flooring material
- Molded headliner with padded panel inserts
- XM friendly stereo system with CD and interior/cockpit speakers with wired remote

Head

- Oversized head with separate shower stall
- Built-in vanity with sink
- Solid surface countertop
- Full length mirror on door
- Single lever faucet and soap dispenser
- Shower drain sump pump system
- Molded seat in shower stall with storage beneath & locker outboard
- Fresh water electric MSD with holding tank
- Waste tank monitor
- Macerator for overboard discharge
- Pump out fitting on deck
- Stainless steel opening port with screen
- 12V Vent Fan

Master Stateroom

- Cherry interior on molded composite hull liner
- High pressure laminate "teak-n-holly" cabin sole
- Molded headliner with padded panel inserts
- Island queen centerline berth forward with drawers and storage below
- Shelves outboard with cherry fiddles
- Cherry hull ceiling
- Cedar lined hanging locker with shelf
- Reading lights
- Multi drawer dresser with dovetailed drawers
- LED overhead lighting

Guest Stateroom

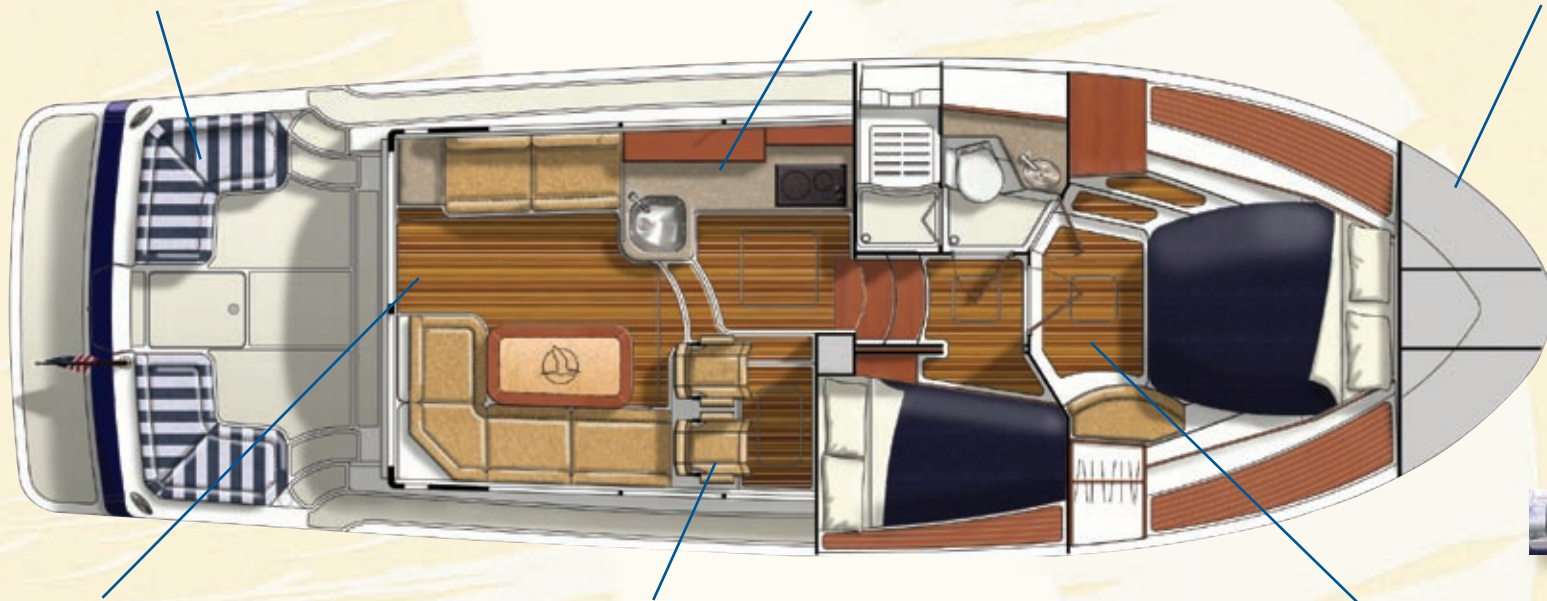
- Molded headliner with padded panel inserts
- Wide double berth with drawers under
- Night stand with storage
- Outboard storage shelves over berth
- Cherry headboard with reading lights
- Cherry hull ceiling

BACK COVE 37

Cockpit seating to suit today's recreational boating lifestyles. Built in seating is as comfortable as it is practical with open storage bins in all seats. Below the cockpit sole a large open lazarette is available for storage of bulky items.

Wide side decks and heavy duty hand rails for safety and ease of movement from the cockpit to the bow. In her interior layout the galley is at mid height so that a crewmember working in the galley can remain a part of the social gathering in the salon.

Fore deck and anchoring well laid out for cruising boaters who regularly set and retrieve anchors. A deep anchor locker suits all ground tackle and also accommodates fenders and additional dock lines.



Her entire helm deck cabin sole rises on a hydraulic lift to expose the engine compartment below.

Two Stidd N series helm seats offer the most comfortable helm seating. The operator can spend extended periods at the helm without the fatigue brought on by lesser helm chairs.

Two cabins for privacy and personal comfort, with the owner's stateroom offering a large island berth with storage under. The guest cabin is laid out for a couple, with copious storage below the berth top. The en-suite head unit offers a separate stall shower.

SPECIFICATIONS

LOA (not including anchor roller or swim platform) . 38' (11.59 M)
 Length on Deck 37.6' (11.46 M)
 Beam (MAX) 13' (3.968 M)
 Draft 3.3' (1 M)

Deadrise (at transom) 16 degrees
 Displacement (full est.) 22,000 lbs (9.97 tonnes)
 Fuel tank capacity 300 gallons (1136 liters)
 Water tank capacity 120 gallons (454 liters)

Holding tank capacity 50 gallons (189 liters)
 Max Headroom below and on helm deck 6.42' (1.96 M)
 Sleeping Accommodations 5 @ 6.5' (1.98 M)
Designed to ABYC, NMMA, USCG, ISO Category "B" standards.